

Drop Test Simulations for the Electronics Industry

Introduction

In the process of designing an electronic product, be it MP3 players, Smartphones, cameras, PCBs or hard disks, engineers have to overcome many challenges, including a **high demand for innovation in product aesthetics and functionality**. A particularly important consideration in the design process is drop tests and/or shock simulations, to ensure that the product is durable and reliable.

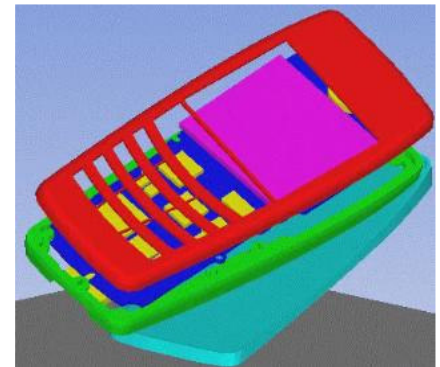
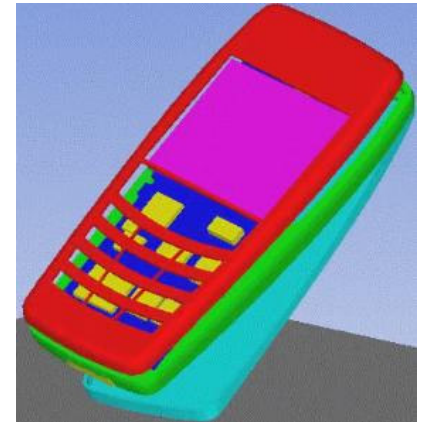
ANSYS Explicit Solvers

Offering unequalled depth and unparalleled breadth in engineering simulation, ANSYS explicit solvers enable engineers to conduct a variety of shock or drop test simulations. The ANSYS LS-DYNA product allows engineers to **specify, among other variables, the angle of incline, initial velocities, frictional effects and drop heights**.

ANSYS Explicit Pro, available in the upcoming ANSYS Release 12.0, also offers **unprecedented ease and efficiency** in simulating drop tests. The implementation of ANSYS solutions enables engineers to optimize design and engineering concepts for electronics products to meet the demands of the future.

Agenda

- 1 The ANSYS Advantage
- 2 Simulating Drop Tests with ANSYS Explicit Solvers
- 3 Case Study
- 4 Networking tea break

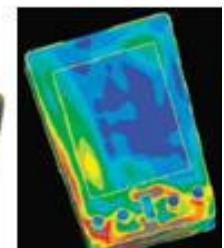
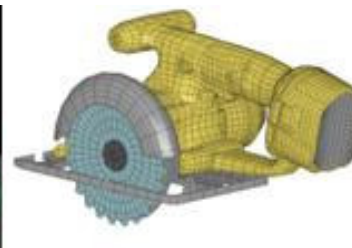
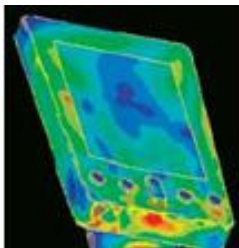


Seminar Information

Date : 13 Mar 2009
 Time : 2.00 pm - 5.00 pm
 Venue : CAD-IT Training Centre
 159 Sin Ming Road, #03-05 Amtech Building, Singapore 575625 ([view map](#))

This seminar is **free**. To register, please go to http://www.cadit.com.sg/CADITEvents_Main/caditseminars.aspx.

For enquiries, please contact Mr. Chiang Hong Keat at (65) 6508-7570 or hongkeat.chiang@cadit.com.sg.



CAD-IT Consultants (Asia) Pte Ltd

159 Sin Ming Road #03-05 Amtech Building Singapore 575625
 Tel: (65) 6508 7575 Fax: (65) 6454 3766 Email: events@cadit.com.sg
<http://www.cadit.com.sg>

Bringing you tomorrow's technology... today!