

# Get To Know ANSYS Workbench

## Introduction

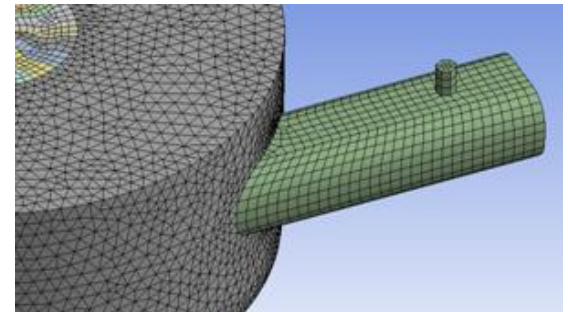
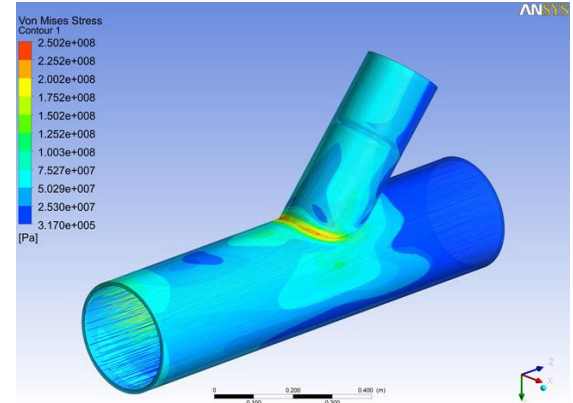
ANSYS® Workbench™ is the framework upon which the industry's broadest and deepest suite of advanced engineering simulation technology is built. With bi-directional CAD connectivity, an automated project update mechanism, pervasive parameter management and integrations with meshing tools, Multi-Physics, CFD, Explicit Dynamic Analysis and Optimization tools, the ANSYS Workbench platform delivers unprecedented productivity that truly enables Simulation Driven Product Development™.

## Objectives

The aim of this workshop is to create awareness amongst ANSYS users across all domains and to demonstrate the Power and the Ease of Use of Workbench.

## Who Should Attend

- Engineers who are currently ANSYS Classic users.
- CAD Engineers who want to do simulation with ease.
- Engineers who want to know more about ANSYS Workbench.



## Details of Workshop

<p><b>Features of ANSYS Workbench</b></p> <ul style="list-style-type: none"> <li>✓ Complete Simulation System Guide</li> <li>✓ Integrated Parameter Management</li> <li>✓ Defines Geometry Contacts Automatically</li> </ul>	<p><b>Benefits of using ANSYS Workbench</b></p> <ul style="list-style-type: none"> <li>✓ Single Integrated Simulation Environment</li> <li>✓ Greatly Reduced Learning Curve</li> <li>✓ CAD Geometry based</li> </ul>
<p><b>Bi-directional Associativity between ANSYS and SpaceClaim</b></p> <ul style="list-style-type: none"> <li>✓ Geometry Update on a single click</li> <li>✓ Able to Parameterize Geometry</li> <li>✓ Able to take in most Native CAD Formats</li> </ul>	<p><b>Demonstration using participants' geometry</b></p> <ul style="list-style-type: none"> <li>✓ Native CAD to be given in Advance</li> <li>✓ Hand's on Simulation of your own Model</li> <li>✓ See Immediate Simulation Results</li> </ul>

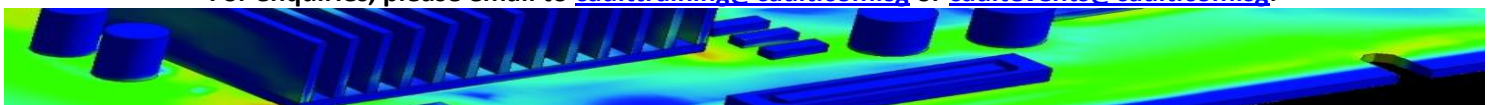
## Workshop Information

**Date** : 19 August 2011  
**Time** : 2.00 pm to 5.00 pm  
**Venue** : CAD-IT Training Centre  
 159 Sin Ming Road, #03-05 Amtech Building, Singapore 575625 ([view map](#))

**Disclaimer:** CAD-IT reserves the right to cancel or postpone this workshop due to unforeseen circumstances.

To register for this **free** workshop, please go to [http://www.cadit.com.sg/CADITEvents\\_Main/caditseminars.aspx](http://www.cadit.com.sg/CADITEvents_Main/caditseminars.aspx).

For enquiries, please email to [cadittraining@cadit.com.sg](mailto:cadittraining@cadit.com.sg) or [caditevents@cadit.com.sg](mailto:caditevents@cadit.com.sg).



**CAD-IT Consultants (Asia) Pte Ltd**

[www.cadit.com.sg](http://www.cadit.com.sg)

*Bringing you tomorrow's technology... today!*