

Get To Know ANSYS Workbench

Introduction

ANSYS[®] Workbench[™] is the framework upon which the industry's broadest and deepest suite of advanced engineering simulation technology is built.

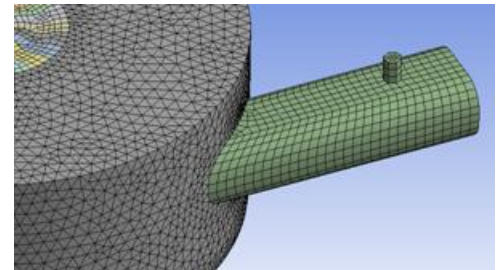
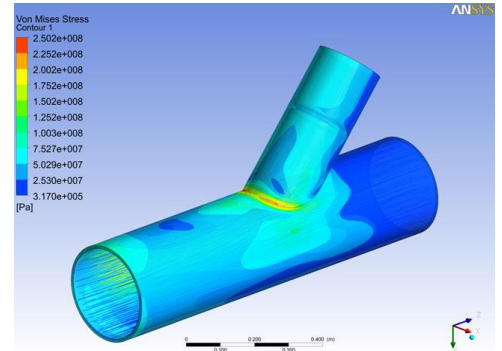
With bi-directional CAD connectivity, an automated project update mechanism, pervasive parameter management and integrations with meshing tools, Multi-Physics, CFD, Explicit Dynamic Analysis and Optimization tools, the ANSYS Workbench platform delivers unprecedented productivity that truly enables Simulation Driven Product Development[™].

Objectives

The aim of this workshop is to create awareness amongst ANSYS users across all domains and to demonstrate the Power and Ease of use of Workbench.

Who Should Attend

- Engineers who are currently ANSYS Classic users
- CAD Engineers who want to do simulation with ease
- Engineers who want to know more about ANSYS Workbench



Details of Workshop

Features of ANSYS Workbench

- Complete Simulation System Guide
- Integrated Parameter Management
- Defines Geometry Contacts Automatically

Benefits of using ANSYS Workbench

- Single Integrated Simulation Environment
- Greatly Reduced Learning Curve
- CAD Geometry Based

Challenges Faced and Solutions Provided

Challenges faced when not using ANSYS Workbench

- Stand-alone ANSYS applications
- Unlinked Multiphysics
- No complete guide for complex simulation process
- Manual intervention to new parametric study
- Uncoupled link to optimization tool
- No automatic updates

Solutions provided when using ANSYS Workbench

- Tight integration for all ANSYS applications
- Provides Multiphysics coupling with easy set-up
- Complete analysis system guide for the simulation process
- Integrated parameter management to perform "what if" studies
- Automatic project level update for any changes made and to perform design iteration

Testimonials About the Workshop

The hands-on experience & walk through are commendable.

-Kenn Tan, Chiyoda Singapore Pte Ltd

Every function and step is explained clearly.

-Daniel Hii, NUS

The presentation is clear and the trainer is well-prepared.

-Kua Zai Hong, Magnum Subsea System

Testimonials About ANSYS

ANSYS is undoubtedly superior to other FEM software in the market because of its easy-to-use interface and accurate simulation results.

-Dr Xu Kai, Compass Energy Pte Ltd

ANSYS Professional NLT to provide quick design changes and more accurate results for better fabrication of industrial pressure vessels.

-S. R. Reddy, Foster Wheeler Daniel Hii, NUS

ANSYS enable us to advance in our simulation work and perform structural and thermal analysis with its comprehensive and user-friendly aspects.

-Loh Chiah Vern, DSO National Laboratories

ANSYS helps us to develop tooling and fixture in manufacturing and testing processes

-Amnuay Meeraeng, Compart Precision (Thailand)

Workshop Information

Date (1st run)	: 30 March 2012
Date (2nd run)	: 25 May 2012
Time	: 2.00 pm - 5.00 pm
Venue	: 159 Sin Ming Road, #03-05 Amtech Building, Singapore 575625 (view map)

- This workshop is **free of charge**.
- This workshop is meant as a general overview; participants who wish to be proficient in ANSYS Mechanical should attend the relevant training course(s). Please email trainingsin@cadit.com.sg for enquiries.
- CAD-IT Consultants reserves the right to cancel or postpone any event due to unforeseen circumstances.
- To register, please go to <http://www.cadit.com.sg/events.php>.

For enquiries, please call 6508-7575 or email to caditevents@cadit.com.sg.

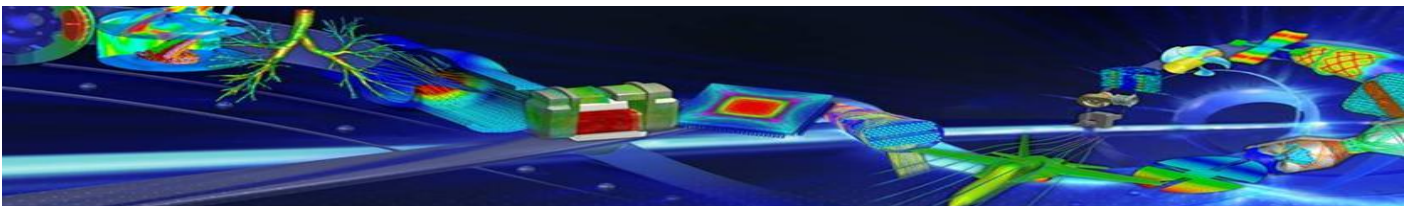
About CAD-IT Consultants

Formed in 1991, CAD-IT Consultants (Asia) Pte Ltd is a leading **ISO 9001:2008** certified PLM and education provider in Asia providing world-class solutions that enable companies to achieve greater product innovation, quality and productivity with reduced lead time and costs. Our priority is in building mutually successful and long term partnerships with our customers and partners.

CAD-IT has received more than 60 International Awards for marketing/ service excellence. Among its most recent accolades are the Asia Pacific Entrepreneur Award (APEA) - Outstanding Entrepreneur Award 2010, APEA Most Promising Entrepreneur Award 2009, the Singapore Prestige Brand Award (SPBA) - Established Brand Award 2011, 2010 and 2009, and the Singapore SME 1000 Company 2011.

CAD-IT Consultants' suite of PLM solutions include ANSYS (Multiphysics FEA/CFD), Ensign (Extreme Visualization), Goldfire Innovator (Innovation Process Management), Cortona3D (3D Technical Documentation), SpaceClaim (3D Direct Modeler), Mentor Graphics Valor DFM & Valor MSS (Complete Manufacturing Execution Suite), Stampack (Sheet Metal Forming CAE), Rheoware (Blow-moulding and thermo-forming), DEFORM (Bulk Metal Forming CAE) and Autodesk Moldflow (Plastics CAE).

Since February 2010, CAD-IT is honored to partner the Singapore Workforce Development Agency (WDA) to offer Advanced Certificate courses in PLM and Engineering Simulation, under the Workforce Skills Qualifications (WSQ) framework, with the charter to upgrade the technological capabilities of organizations in Singapore so as to enable them to undertake higher value-added design, engineering, manufacturing and R&D activities. From July 2010 to December 2011, CAD-IT has trained over 200 engineering professionals in WSQ courses.



CAD-IT Consultants (Asia) Pte Ltd

159 Sin Ming Road #03-05 Amtech Building Singapore 575625

Tel: (65) 6508 7575

Fax: (65) 6454 3766

Email: training@cadit.com.sg

<http://www.cadit.com.sg>

Bringing you tomorrow's technology... today!