

Get To Know ANSYS Workbench

Introduction

ANSYS[®] Workbench[™] is the framework upon which the industry's broadest and deepest suite of advanced engineering simulation technology is built.

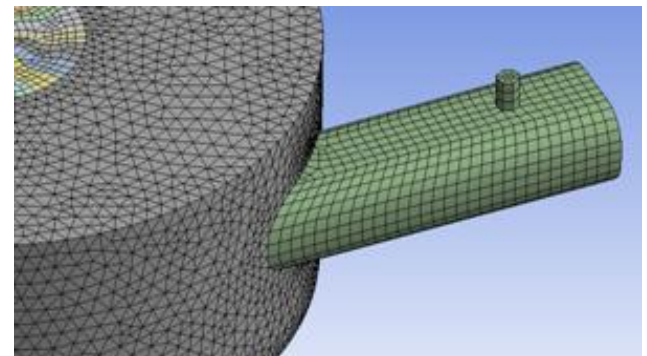
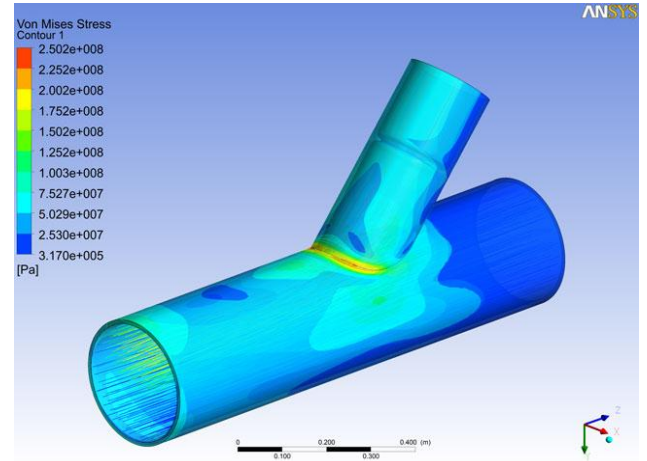
With bi-directional CAD connectivity, an automated project update mechanism, pervasive parameter management and integrations with meshing tools, Multi-Physics, CFD, Explicit Dynamic Analysis and Optimization tools, the ANSYS Workbench platform delivers unprecedented productivity that truly enables Simulation Driven Product Development[™].

Objectives

The aim of this workshop is to create awareness amongst ANSYS users across all domains and to demonstrate the Power and the Ease of Use of Workbench.

Who Should Attend

- Engineers who are currently ANSYS Classic users.
- CAD Engineers who want to do simulation with ease.
- Engineers who want to know more about ANSYS Workbench.



Details of Workshop

Features of ANSYS Workbench	Benefits of using ANSYS Workbench
<ul style="list-style-type: none"> ✓ Complete Simulation System Guide ✓ Integrated Parameter Management ✓ Defines Geometry Contacts Automatically 	<ul style="list-style-type: none"> ✓ Single Integrated Simulation Environment ✓ Greatly Reduced Learning Curve ✓ CAD Geometry based
Bi-directional Associativity between ANSYS and SpaceClaim <ul style="list-style-type: none"> ✓ Geometry Update on a single click ✓ Able to Parameterize Geometry ✓ Able to take in most Native CAD Formats 	

Challenges and Solutions of ANSYS Workbench

Challenges	Solutions
<ul style="list-style-type: none"> ✗ Stand-alone ANSYS applications ✗ Unlinked Multiphysics ✗ No complete guide for the complex simulation process ✗ Manual intervention to new parametric study and uncoupled link to optimisation tool ✗ No automatic updates 	<ul style="list-style-type: none"> ✓ Tight Integration for all ANSYS applications ✓ Provide Multiphysics coupling with easy set-up ✓ Complete analysis system guide for the engineering simulation process ✓ Integration parameter management to perform "what if" study and produce optimisation ✓ Automatic project level update for any changes made and to perform design iteration

Testimonials from the workshops

The hands-on experience & walk through are commendable.

-Kenn Tan, Chiyoda Singapore Pte Ltd

Every function and step is explained clearly.

-Daniel Hii, NUS

The presentation is clear and the trainer is well-prepared.

-Kua Zai Hong, Magnum Subsea System

Testimonials from the ANSYS Users

ANSYS is undoubtedly superior to other FEM software in the market because of its easy-to-use interface and accurate simulation results.

-Dr Xu Kai, Compass Energy Pte Ltd

ANSYS Professional NLT to provide quick design changes and more accurate results for better fabrication of industrial pressure vessels.

-S. R. Reddy, Foster Wheeler Daniel Hii, NUS

ANSYS enable us to advance in our simulation work and perform structural and thermal analysis with its comprehensive and user-friendly aspects.

-Loh Chiah Vern, DSO National Laboratories

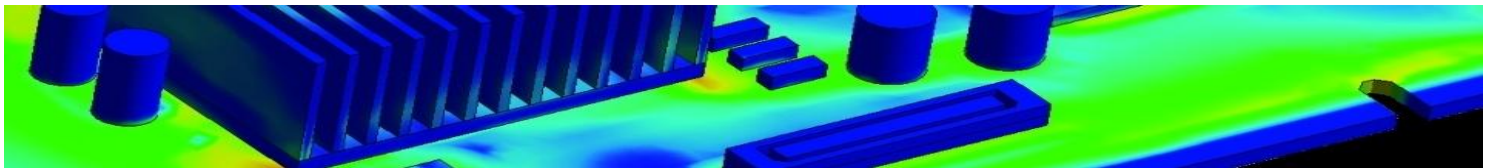
ANSYS helps us to develop tooling and fixture in manufacturing and testing processes

-Amnuay Meeraeng, Compart Precision (Thailand)

Disclaimer: CAD-IT reserves the right to cancel or postpone this workshop due to unforeseen circumstances.

To register for this **free** workshop, please go to <http://www.cadit.com.sg/events.php>.

For enquiries, please email to trainingsin@cadit.com.sg or caditevents@cadit.com.sg.



CAD-IT Consultants (Asia) Pte Ltd

www.cadit.com.sg

Bringing you tomorrow's technology... today!